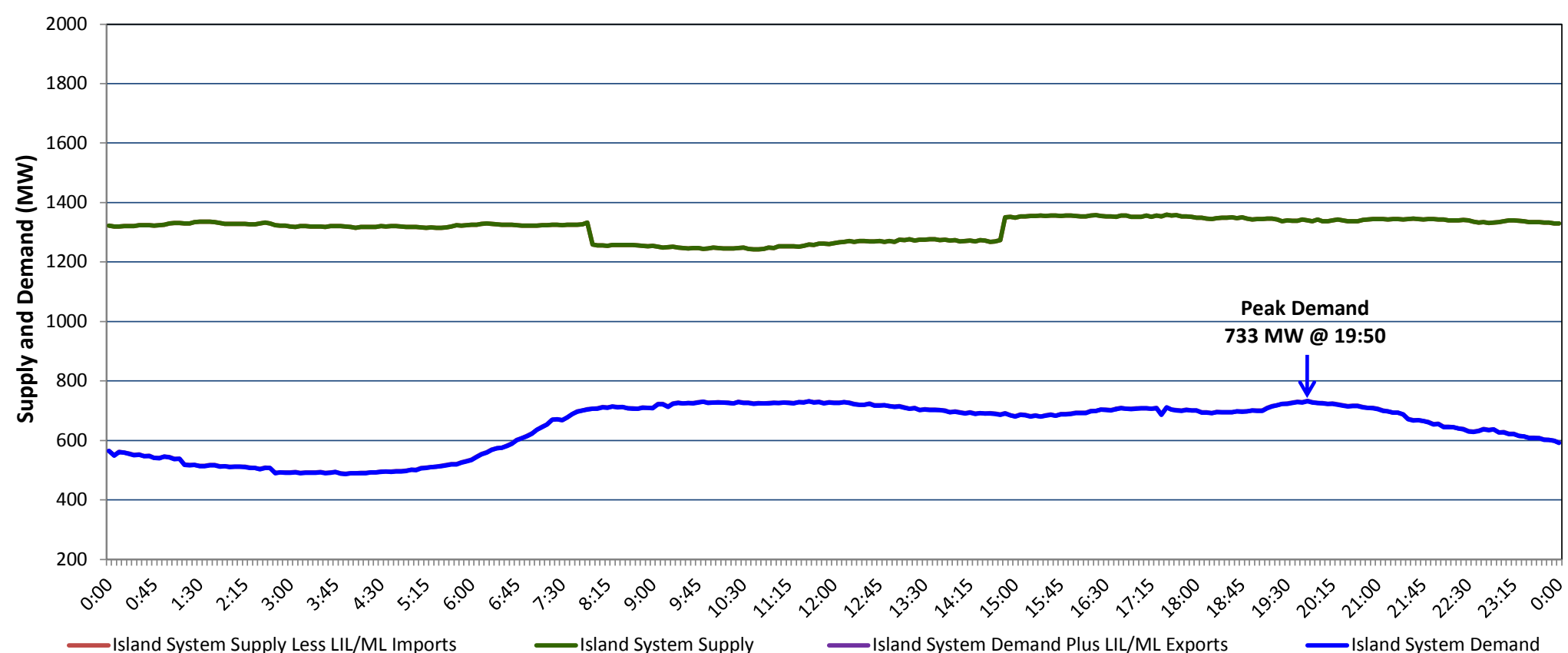


**Newfoundland Labrador Hydro (NLH)
Supply and Demand Status Report Filed Monday, September 28, 2020**

**Section 1
Island Interconnected System Supply, Demand & Exports
Actual 24 Hour System Performance For Friday, September 25, 2020**



Supply Notes For September 25, 2020

- A As of 0853 hours, June 21, 2020, Holyrood Unit 3 available but not operating (150 MW).
- B As of 0808 hours, July 15, 2020, Holyrood Unit 2 unavailable due to planned outage (170 MW).
- C As of 1811 hours, September 02, 2020, Holyrood Unit 1 available but not operating (170 MW).
- D As of 1748 hours, September 13, 2020, Bay d'Espoir Unit 7 unavailable due to planned outage (154.4 MW).
- E As of 0705 hours, September 22, 2020, Hardwoods Gas Turbine unavailable due to planned outage (50 MW).
- F **At 0756 hours, September 25, 2020, Bay d'Espoir Unit 1 unavailable due to planned outage (76.5 MW).**
- G **At 1450 hours, September 25, 2020, Bay d'Espoir Unit 1 available (76.5 MW).**

**Section 2
Island Interconnected Supply and Demand**

Sat, Sep 26, 2020	Island System Outlook ³		Seven-Day Forecast	Temperature (°C)		Island System Daily Peak Demand (MW)	
				Morning	Evening	Forecast	Adjusted ⁷
Available Island System Supply: ⁵	1,355	MW	Saturday, September 26, 2020	10	12	750	750
NLH Island Generation: ⁴	1,000	MW	Sunday, September 27, 2020	14	16	740	740
NLH Island Power Purchases: ⁶	120	MW	Monday, September 28, 2020	17	17	760	760
Other Island Generation:	235	MW	Tuesday, September 29, 2020	17	18	745	745
ML/LIL Imports:	-	MW	Wednesday, September 30, 2020	19	19	740	740
Current St. John's Temperature & Windchill:	7 °C	N/A	Thursday, October 01, 2020	20	17	755	755
7-Day Island Peak Demand Forecast:	760	MW	Friday, October 02, 2020	21	20	755	755

Supply Notes For September 26, 2020

- Notes:
1. Generation outages for running and corrective maintenance are included. These are not unusual for power system operations. They generally do not impact customer supply. The power system operators schedule outages to system equipment whenever possible to coincide with periods when customer demands are low and sufficient supply reserves are available. However, from time to time equipment outages are necessary and reserves may be impacted.
 2. Due to the Island system having no synchronous connections to the larger North American grid, when there is a sudden loss of large generating units there may be a requirement for some customer's load to be interrupted for short periods to bring generation output equal to customer demand. This automatic action of power system protection, referred to as under frequency load shedding (UFLS), is necessary to ensure the integrity and reliability of system equipment. Under frequency events have typically occurred 5 to 8 times per year on the Island Interconnected System and the resultant customer load interruptions are generally less than 30 minutes. With the activation of the Maritime Link frequency controller during the winter of 2018, UFLS events have occurred less frequently.
 3. As of 0800 Hours.
 4. Gross output including station service at Holyrood (24.5 MW) and improved NLH hydraulic output due to water levels (35 MW).
 5. Gross output from all Island sources (including Note 4).
 6. NLH Island Power Purchases include: CBPP Co-Gen, Nalcor Exploits, Rattle Brook, Star Lake, Wind Generation and capacity assistance (when applicable).
 7. Adjusted for curtailable load, market activities and the impact of voltage reduction when applicable.

**Section 3
Island Peak Demand Information
Previous Day Actual Peak and Current Day Forecast Peak**

Fri, Sep 25, 2020	Actual Island Peak Demand ⁸	19:50	733 MW
Sat, Sep 26, 2020	Forecast Island Peak Demand		750 MW

Notes: 8. Island Demand / LIL / ML Exports (where applicable) is supplied by NLH generation and purchases, plus generation owned and operated by Newfoundland Power and Corner Brook Pulp & Paper (Deer Lake Power, DLP).